



CONTACT US

KEYSTONE CHILD, YOUTH
AND FAMILY SERVICES
1793 3rd Avenue West
Owen Sound, ON
N4K 6Y2

Fax: 519-371-6397

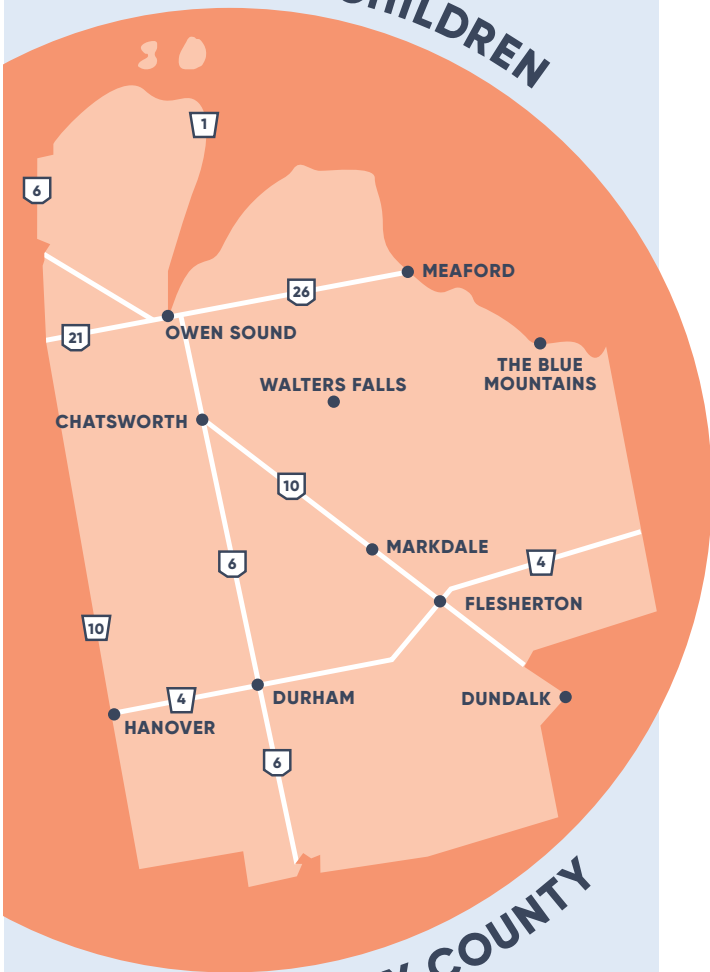
BUILDING RESILIENCY PROGRAM
For referrals please contact intake
at 1-800-567-2384
or 519-371-4773 ext. 180

For more information contact us at
519-371-4773 ext. 134 or 133

www.keystonebrucegrey.org



HELPING CHILDREN



ACROSS GREY COUNTY



BUILDING RESILIENCY



IN GREY COUNTY

Supporting
**Social and Emotional
Development**
for children in licensed
Child Care throughout
Grey County

FIND OUT HOW WE CAN HELP

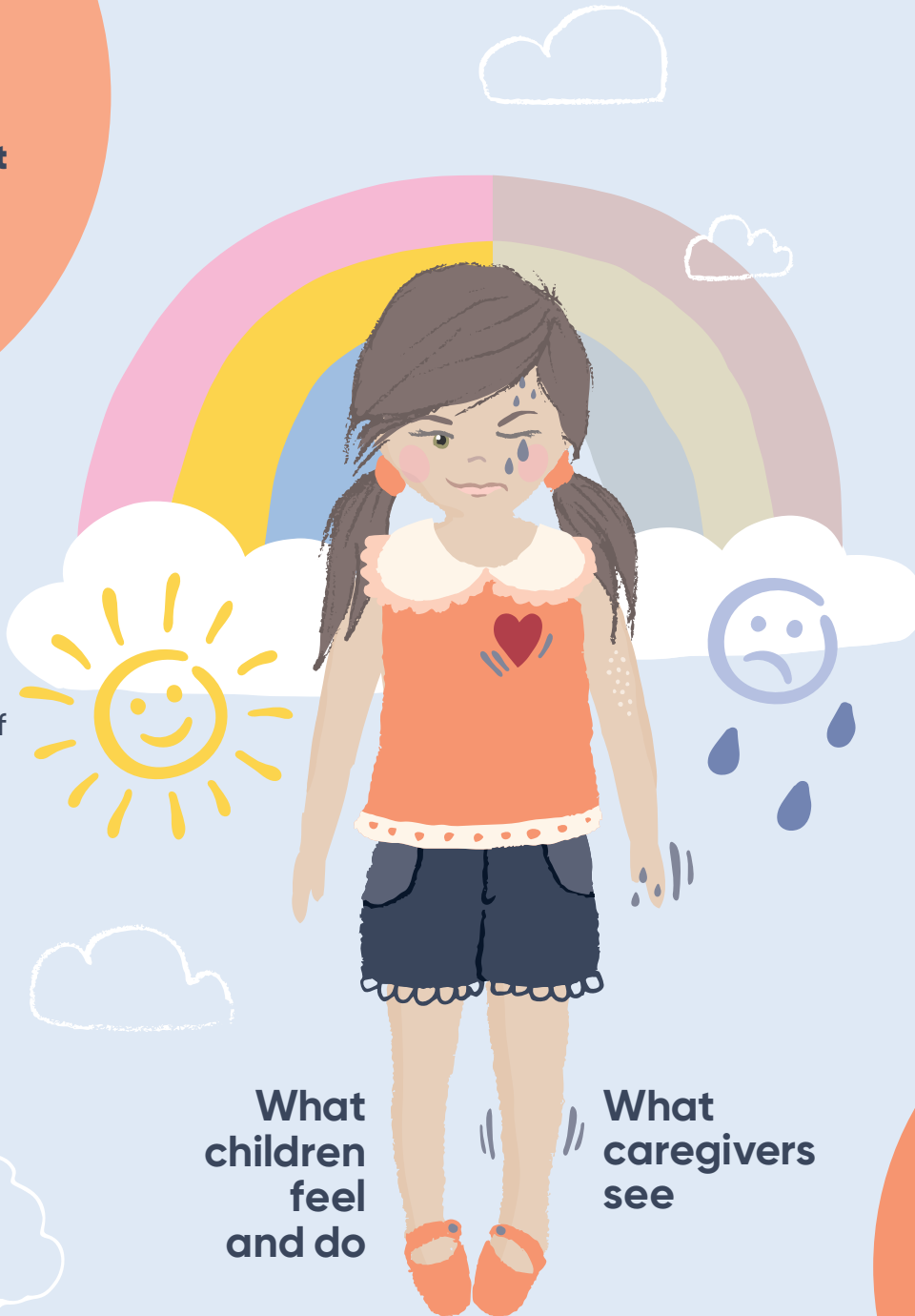
WHO WE ARE

Child Well-Being Facilitators, Registered Early Childhood Educators that are dedicated to supporting safe and therapeutic environments for children.

HOW WE CAN HELP

Supporting emotional and social development of children in child care through;

- consultation to child care staff
- professional development opportunities
- direct service to child



What children feel and do

What caregivers see

Social development

is our interaction with others. It is the ability to form secure relationships.

Emotional development

is regulating and expressing emotions. It involves the way one feels about themselves, others and the world.

WHAT CHILDREN FEEL AND DO

You may see some of these behaviours that could signal a child's need for help.

- Significant change in the child's behaviour signs.
- Known or suspected trauma or other diagnosis impacting their success in the child care program

WHO CAN REFER

Grey County Licensed Child Care Programs

Parents / Guardians

Professionals

